



# PPL Foundation

## Grant Program Overview

January 2026



# Who We Are



**Lissette Santana**

President, PPL Foundation  
[LOSantana@pplweb.com](mailto:LOSantana@pplweb.com)



**Jane George**

Regional Affairs Director  
[JGeorge2@pplweb.com](mailto:JGeorge2@pplweb.com)



**Jonah Howe**

Regional Affairs Director  
[JGHowe@pplweb.com](mailto:JGHowe@pplweb.com)



**Kelly Palmer**

Regional Affairs Director  
[KPalmer1@pplweb.com](mailto:KPalmer1@pplweb.com)



**Kathleen Oswalt**

Sr. Corporate  
Relations Specialist  
[KAOswalt@pplweb.com](mailto:KAOswalt@pplweb.com)

# A Powerful Network

PPL Corporation's family of companies provide electricity and natural gas to power our customer's lives. PPL's high-performing, award-winning utilities are addressing energy challenges head-on by building smarter, more resilient and more dynamic power grids and advancing sustainable energy solutions.



**3.5M**  
customers  
served



**6,700**  
dedicated  
employees



**>1M outages**  
avoided since  
2015 thanks to  
smart grid technology



**50+**  
J.D. Power  
awards for customer  
satisfaction







# Serving Pennsylvania Communities

We deliver safe, reliable and affordable electricity to more than 1.5 million homes and businesses in eastern and central Pennsylvania.



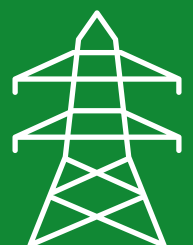
**1.5M**  
customers



**2,000+**  
employees

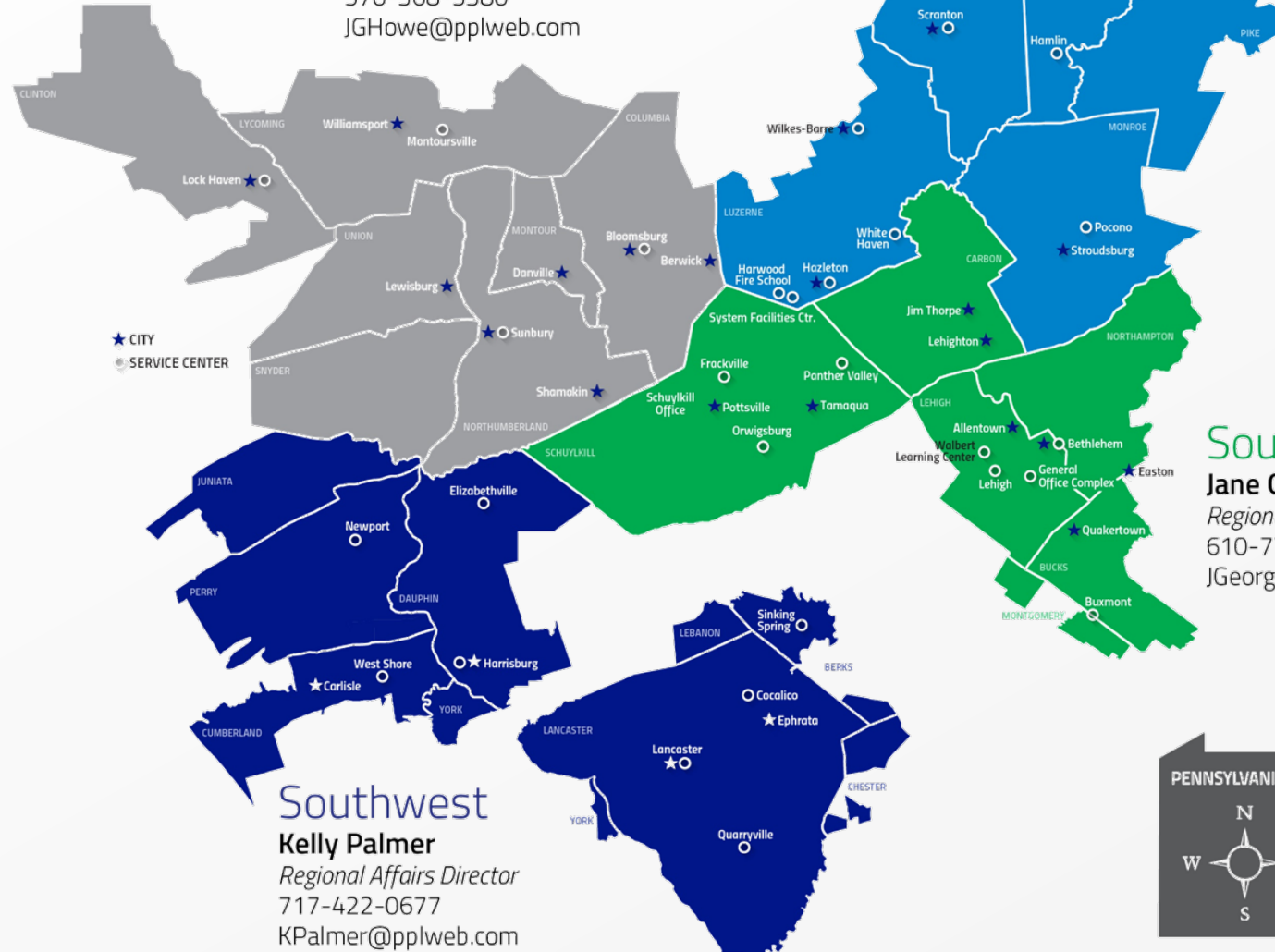


**29**  
counties



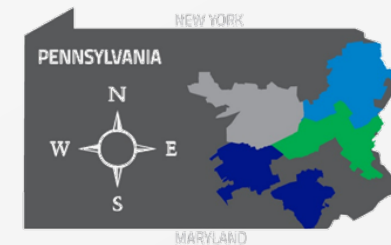
**50,000**  
miles of power lines

**Northwest**  
**Jonah Howe**  
*Regional Affairs Director*  
 570-368-5380  
 JGHowe@pplweb.com



**Southeast**  
**Jane George**  
*Regional Affairs Director*  
 610-774-5249  
 JGeorge2@pplweb.com

**Southwest**  
**Kelly Palmer**  
*Regional Affairs Director*  
 717-422-0677  
 KPalmer@pplweb.com



01-02-2025



# We give back in ways that support strong communities

**500+**  
Organizations  
received support



**30,000+**  
Hours  
volunteered by  
PPL employees



**1000+**  
Employee  
volunteers



**29**  
Counties  
supported in  
Pennsylvania



**\$6.5M+**  
Total annual  
giving



**400+**  
Teachers  
awarded  
grants  
since 2000







PPL Foundation

# POWERING A BRIGHTER FUTURE FOR OUR COMMUNITIES

Investing in education, strengthening  
neighborhoods and advancing opportunities for all



# Focus Areas



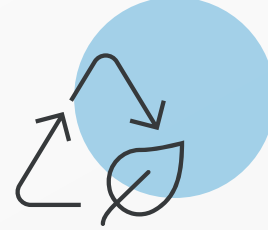
## Community Vitality

- Housing stability
- Food security
- Energy assistance
- Arts & Culture



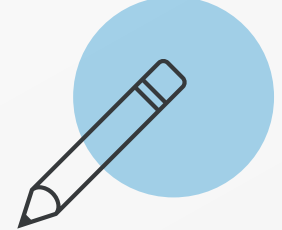
## Access to Opportunities

- Economic development
- Inclusive skill-building or entrepreneurship training
- Workforce development



## Resilience & Sustainability

- Environmental stewardship
- Neighborhood revitalization
- Emergency preparedness
- Disaster relief



## Education

- STEM programs
- Literacy
- Career pathways
- College readiness



# Empowering Communities Grants

Applications accepted twice a year – in the spring and fall.



All focus areas accepted in each application cycle

One grant award per year



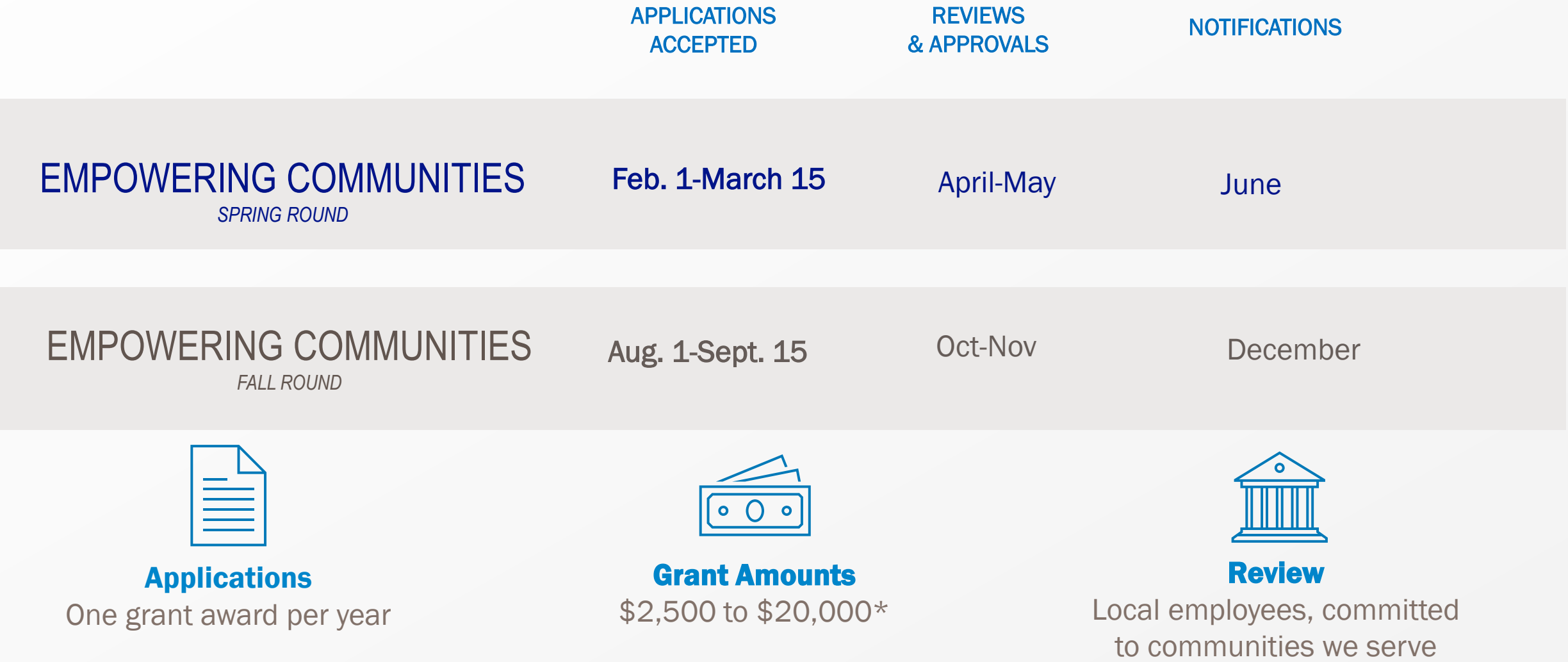
Grants awarded will be between \$2,500 - \$20,000



Eligible nonprofits and programs must be aligned with one four focus areas:

- Community Vitality
- Access to Opportunities
- Resilience & Sustainability
- Education

# Timeline and process





# Other Funding Opportunities

In addition to grants funded by the PPL Foundation, PPL also supports additional funding opportunities for eligible organizations.

## EITC

PPL Electric Utilities provides support to eligible Education Improvement Organizations and Pre-K Scholarship Organizations. We do not participate in the Scholarship category of this program. Schools are not eligible to apply.

Applications accepted June 1-July 15.

## SPONSORSHIPS

PPL supports a limited number of events and programs benefiting local communities.

Applications accepted year-round.



# How to apply

**Visit**

pplcares.com



**Scroll Down**

to “Frequently Asked Questions ”



**Select**

“Application Process”



**Click**

“Access portal”





PPL Foundation

# Ask us a question!

[Community@pplweb.com](mailto:Community@pplweb.com)  
[pplcares.com](http://pplcares.com)

Never miss a grant opportunity –  
sign up for our newsletter today!

