

## PPL receives FERC approval to expand Holtwood hydroelectric plant



The rendering above shows what Holtwood would look like after a proposed expansion that would more than double its generating capacity.

Approval by the Federal Energy Regulatory Commission of a request to expand PPL's Holtwood hydroelectric plant is a significant milestone in the plan to increase generation of clean, renewable energy and improve migratory fish passage.

"Expanding the Holtwood plant is part of PPL's commitment to make sound financial investments while increasing the proportion of non-fossil-fuel resources in our strong generation portfolio," said Chris Porse, plant manager. "We appreciate FERC's timely action on our application."

About 40 percent of the electricity PPL generates annually comes from nuclear, hydroelectric and renewable sources that do not emit carbon dioxide to the atmosphere.

The expansion project, with an estimated cost of \$440 million, will add enough renewable energy to

power 100,000 typical homes. PPL's planned 125-megawatt increase in generating capacity will more than double Holtwood's current generating capacity of 108 megawatts. In addition, in approving this application FERC also extended the existing operating license for the Holtwood hydroelectric plant through August 2030.

PPL resubmitted the Holtwood expansion application to FERC in April 2009 after withdrawing the original application in December 2008, citing economic conditions. In refiling the application, PPL said incentives in the federal stimulus package could make the project feasible again by offsetting the factors that caused the company to withdraw its original application.



Interior view of Holtwood powerhouse.

Additional benefits of the project are improved passage for migratory fish along the Susquehanna River and its tributaries, and improved recreational opportunities.

PPL has selected Walsh Construction of Chicago as the general contractor for the project, which is expected to create more than 200 construction jobs. Construction is expected to start in the first quarter of 2010.

PPL purchased the turbine generators for the project from Voith Hydro of York.

# Part of Holtwood recreational area closed to the public during plant construction

## Restrictions intended to protect public safety while hydroelectric plant is expanded

A portion of PPL's Holtwood recreational area is now closed to the public as construction work begins for a major expansion of the hydroelectric plant.

Because the construction will result in increased vehicle traffic and the use of heavy equipment in and around the Holtwood area, PPL is taking this action to protect public safety on the roads and within the natural areas in the immediate vicinity of the plant.

Only authorized vehicles will have access to the area bordered by the Susquehanna River, Old Holtwood Road, New Village Road and a portion of Pinnacle Road until construction is completed in the spring of 2013.

Recreational activities, including hiking and hunting, will not be permitted in the restricted area during the construction project. The area closed to the public includes Face Rock overlook and several hiking trails. Signs will be posted directing hikers around the area. In addition, "No Trespassing" signs on Old Holtwood Road and around the perimeter of the restricted area will alert the public to the changes.

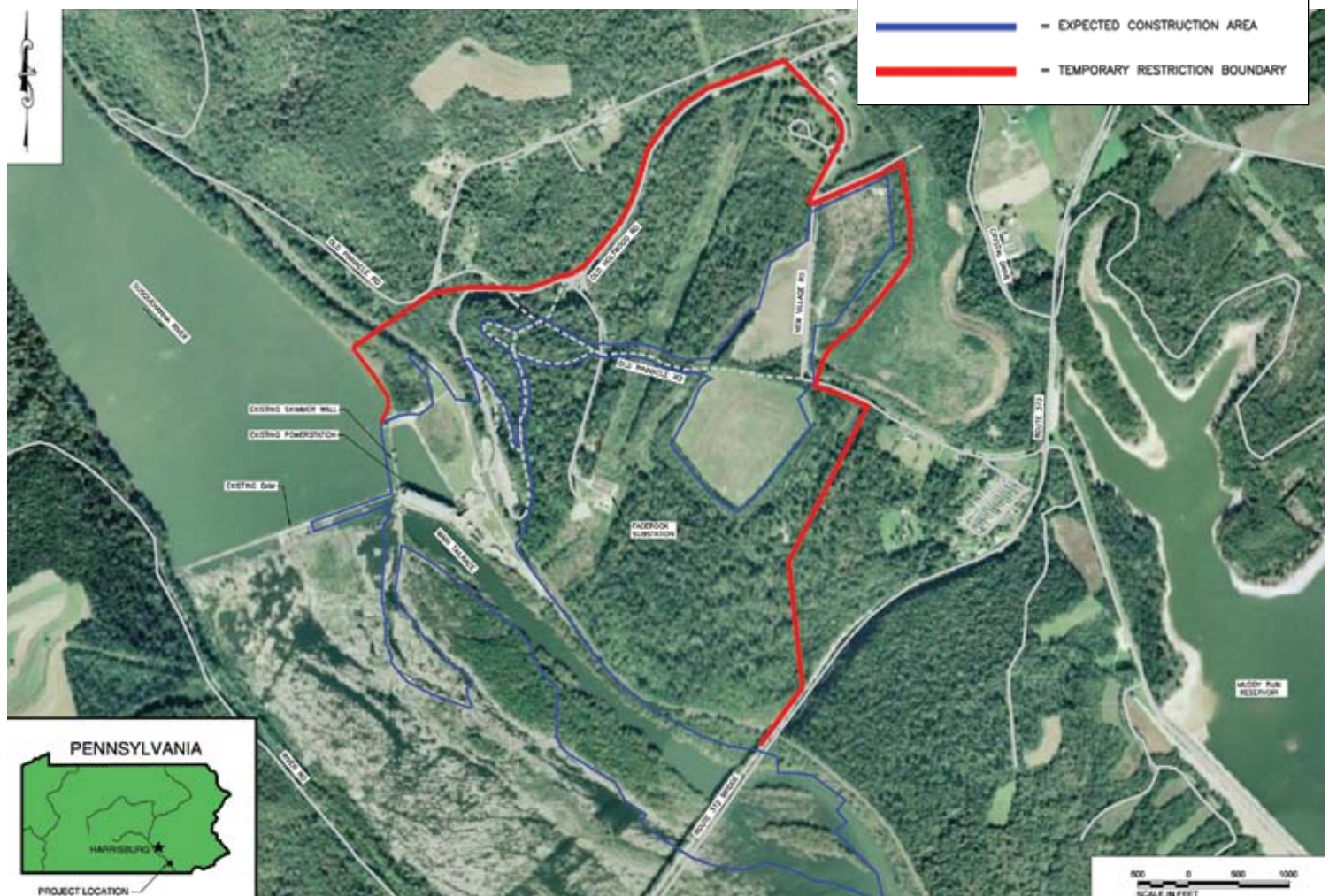
"We know that people value the recreational opportunities available at the Holtwood recreational area, but public safety is our top priority during this important project," said Chris Porse, manager of PPL's Holtwood hydroelectric plant.

PPL has received approval from

the Federal Energy Regulatory Commission to more than double generation of clean, renewable energy and improve migratory fish passage at the 100-year-old hydroelectric power plant.

The Holtwood plant has been generating electricity since 1910, using the power of the water held back by a 55-foot-high dam across the Susquehanna River between

Lancaster and York counties. The dam creates Lake Aldred, an 8-mile reservoir that provides opportunities for boating, fishing and other public recreation.





## Fishing, boating restricted at Holtwood Dam in preparation for expansion

To help protect public safety as PPL prepares for the start of construction at the Holtwood hydroelectric plant, PPL has announced restrictions on fishing and boating activities near the plant.

The tailrace, the area where river water leaves the power plant, will be closed to shoreline fishing until construction is completed in 2013. Boating in the area from the Norman Wood Bridge into the tailrace

also will be restricted because of construction.

“We realize the tailrace area is a popular spot to fish,” said Chris Porse, Holtwood plant manager. “But there will be a great deal of work in and along the tailrace from the plant to the Norman Wood Bridge. With all the heavy equipment and construction activity it was best to keep people away from the area.”

Shoreline fishing will remain available nearby at Safe Harbor and Muddy Run during this period.

The Holtwood expansion project will result in improvements to recreational facilities, including improved access for fishing, parking closer to the river, a new shoreline fishing pier and areas that can be accessed by people with physical limitations.

Follow us on  
**TWITTER**

### Need a quick way to learn what's happening at PPL's Environmental Preserves?

Sign up for Twitter, a free service that lets you keep in touch with short messages. Then visit <http://twitter.com/pplpreserves> to see what PPL is doing to protect the land, care for endangered species and habitats, and provide opportunities for people to learn about and enjoy nature's beauty. Join Twitter today and start following pplpreserves's tweets.

482 Old Holtwood Road  
Holtwood, PA 17532

## Upcoming event: Holtwood Environmental Preserve

**Basic Boating Safety Course**  
**Saturday, Feb. 20, 9 a.m.-5 p.m.**  
**Holtwood Environmental Center**  
**Presented by Pennsylvania Fish and Boat Commission**

Get an early jump on the boating season by taking a safe boating course at the PPL Holtwood Environmental Preserve.

The Pennsylvania Fish and Boat Commission boating safety class gives boaters practical information so they can make more informed decisions on the water. Topics include boat terminology, legal requirements, water activities, and safety and rescue. Boater safety education certificates are

required for all operators of personal watercrafts and for boat operators born after Jan. 1, 1982, who operate motors of 25 horsepower or greater.

Students who successfully complete this course may apply for a boating safety education certificate from the commission for \$10. Participants must be at least 12 years old. PPL will start you off with coffee and donuts. Bring your own lunch.

Registration is required by Feb. 16. The free course will be held at the Holtwood Environmental Center, 9 New Village Road, Holtwood, PA 17532.

If you have any questions or to register, contact Karen Ament at 717-284-6274, or [kament@pplweb.com](mailto:kament@pplweb.com).

The Holtwood Environmental Preserve provides recreational and environmental awareness opportunities on more than 5,000 acres of land along both shores of the lower Susquehanna River in Lancaster and York counties. Information: 1-800-354-8383 toll-free or [pplpreserves@pplweb.com](mailto:pplpreserves@pplweb.com).