



Spring 2009 Environmental Programs

DATE	PROGRAM	LOCATION*	TIME
Sat., April 4	Emily's Garden	WELC	1-2:30 p.m.
Sat., April 18	Pike-Wayne Earth Day Festival 2009	WELC	10 a.m. to 4 p.m.
Sat., May 30	Basic Boating Safety Course	WELC	9 a.m. to 5 p.m.
Sat., June 6	National Trails Day Nature Hike	SP	1:30-3:30 p.m.
Sat., June 13	Ledgesdale Mushroom Walk	LNA	1:30-3 p.m.
Wed., June 24	Books on Bugs: Insects (Ages 4-8)	WELC	11 a.m. to noon

* **Location Code:** WELC – Wallenpaupack Environmental Learning Center SP – Shuman Point Natural Area, Route 590
 LNA – Ledgesdale Natural Area

~~~~~

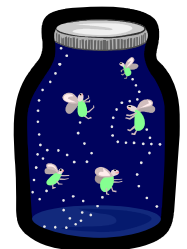
**All programs are free and open to the public unless otherwise noted. For more information, please call 570-251-6196 or e-mail [pplpreserves@pplweb.com](mailto:pplpreserves@pplweb.com).**

PPL's Wallenpaupack Environmental Learning Center, adjacent to the dam on Route 6 in Hawley, Pa., is operated in connection with the Wallenpaupack hydroelectric plant. In 1926, PPL completed construction of the Wallenpaupack dam and power plant, located along the Lackawaxen River. In addition to its capacity to generate 44 megawatts of electricity, the 5,700-acre man-made lake plays a critical role in regional water management and is a popular location for year-round outdoor recreation. Camping, hiking, fishing, boating and water-skiing are just some of the attractions.



### **Nature events to look for from April through June**

Painted turtles begin to appear along pond edges as temperatures rise. The first bats of the season will be flying at dusk any day now. Listen for the piercing calls of spring peepers. Watch for the return of ruby-throated hummingbirds in May. Keep an eye out for the season's first fireflies after dark. Bullfrogs are returning. Snapping turtles begin to search for sites to lay eggs. Common milkweed begins to bloom in mid-June. After June 24, days begin to grow shorter.



\*\*\*\*\*

Additional program details and directions can be found at [www.pplpreserves.com](http://www.pplpreserves.com).



## EMILY'S GARDEN

Saturday, April 4  
1-2:30 p.m.

Presenter: Ed Wesely, local naturalist  
WELC Auditorium

The great poet Emily Dickinson loved wildflowers, especially the delicate blooms of March and April. Her quiet life in 19<sup>th</sup> century Amherst, Mass., was described by a friend as follows: "Her events were the coming of the first bird, the bursting of a chrysalis ... the wondering opening on the new world of every little flower." Join naturalist Ed Wesely for a virtual tour of the fields and streams that Emily Dickinson knew around Amherst, and learn about the spring wildflowers that inspired her. For more information or to register, please call the Delaware Highlands Conservancy at 570-226-3164.

## PIKE-WAYNE EARTH DAY FESTIVAL

Saturday, April 18  
10 a.m. to 4 p.m.  
WELC Auditorium



Come help us celebrate Earth Day. Don't miss this unique learning experience as PPL and local conservation groups join forces to bring you fun activities and events for all ages throughout the day. You can test out a kayak on Lake Wallenpaupack, go on a bird walk, make a watershed sundae or even watch a puppet show. Learn more about the organizations in your own backyard and how you can get involved. Volunteers are needed. Rain or shine. Free and great for all ages. For more information, visit [www.pikewayneearthday.org](http://www.pikewayneearthday.org) or contact PPL at 570-251-6196 or [pplpreserves@pplweb.com](mailto:pplpreserves@pplweb.com).

## BASIC BOATING SAFETY COURSE

Saturday, May 30  
9 a.m. to 5 p.m.

Presenters: Bob Plumb and Curt Tereschak, PFBC,  
and Meg Welker, PPL  
WELC Auditorium

Get an early jump on the boating season by taking a safe boating course. The Pennsylvania Fish and Boat Commission eight-hour boating safety class gives boaters practical information so they can make more informed decisions on the water. Topics include boat terminology, legal requirements, water activities, and safety and rescue. Students who pass the exam at the end of the daylong course can apply for their boating safety education certificate from the commission. Please bring your own

lunch and snacks for the day. A \$10 certificate fee is payable after class. Must be 12 or older. Registration is required. To register, contact PPL at 570-251-6196 or [pplpreserves@pplweb.com](mailto:pplpreserves@pplweb.com).

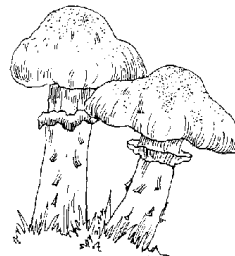


## NATIONAL TRAILS DAY NATURE HIKE

Saturday, June 6  
1:30-3:30 p.m.

Presenter: "Hiking Jane" Frye,  
local naturalist  
PPL Shuman Point  
Natural Area

National Trails Day has grown to inspire nearly a million trail enthusiasts to flock to and celebrate their favorite trails the first weekend in June each year. Join "Hiking Jane" Frye on this three-mile hike and discover all that nature has to offer. PPL's ownership of these 350 acres protects Shuman Point as one of the last large undeveloped natural areas on the shoreline of Lake Wallenpaupack. A hike on this trail includes moderate changes in elevation and fantastic views of the lake. Wear sturdy footwear and dress for the weather. For more information, contact PPL at 570-251-6196 or [pplpreserves@pplweb.com](mailto:pplpreserves@pplweb.com).

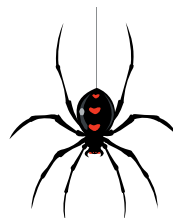


## LEDGEDALE MUSHROOM WALK

Saturday, June 13  
1:30-3 p.m.

Presenter: Nathaniel  
Whitmore, master herbalist  
PPL Ledgesdale Natural Area

Enjoy this leisurely walk with local herbalist, Nathaniel Whitmore, as he identifies local mushrooms found in PPL's Ledgesdale Natural Area. Whitmore will discuss how to differentiate between poisonous and nonpoisonous mushrooms, and in what types of environments they can be found. With any luck, the moist weather has brought an array of mushrooms out in this old hemlock forest. Local wild edible plants will also be discussed. For more information, contact PPL at 570-251-6196 or [pplpreserves@pplweb.com](mailto:pplpreserves@pplweb.com).



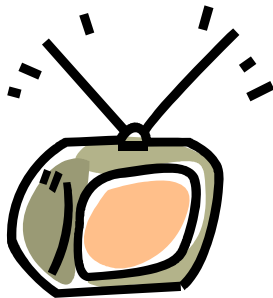
## BOOKS ON BUGS (AGES 4-8)

Wednesday, June 24

11 a.m. to noon  
Presenters: Clem McIntyre,  
PPL naturalist  
WELC Auditorium

Children ages 4-8 are invited to explore the wonderful world of insects during this program that combines a love of reading and nature. Enjoy an insect book while learning about the different insects that live outside your home. Get an up-close look at various bugs and discover what makes each one unique. This program is not open to preschool or day care groups. For more information, contact PPL at 570-251-6196 or [pplpreserves@pplweb.com](mailto:pplpreserves@pplweb.com).

## Environmental Tidbits



### **Analog to Digital?**

This year millions of analog television sets are becoming obsolete because of a new rule requiring all TV signals to switch to digital. Consumers will have to decide what to do with their old analog television sets. Many households will continue to use their old analog televisions. However, some people may choose to discard them. Last year, Americans threw out more than 20 million TV sets.

If you're still watching TV on an old analog set with rabbit ears and planning to replace it with a new digital TV, you don't want to just dump your old set at the dump. Analog televisions contain many chemicals, including up to 8 pounds of lead. If those materials are thrown into a landfill, they can leach into the groundwater.

The U.S. Environmental Protection Agency's **Plug-In To eCycling** program promotes the environmental benefits of recycling and provides the public with information on safely reusing and recycling electronics products, including televisions. **Plug-In To e-Cycling** is a partnership among the EPA, electronic manufacturers and retailers to offer consumers more opportunities to donate or recycle used electronics. For more information on

where to recycle a TV, visit [www.epa.gov/epawaste/consERVE/materials/ecycling](http://www.epa.gov/epawaste/consERVE/materials/ecycling).

You can also recycle your TV by giving it to someone who can use it or donating it to a charity, which will give you a receipt for a possible tax deduction. Or you can convert an analog TV to receive a digital signal by using a converter box.

Both Pike and Wayne County recycling centers plan to hold their annual electronic recycling programs again in the spring or summer. Keep your eye out in local papers for the date announcements.



### **Citizen Science is for the Bees**

The Great Sunflower Project is a wonderful opportunity to get regular folks involved in doing real science, helping to generate a detailed count of the pollinators living in their area. It sounds complicated, but it couldn't be easier. The project provides volunteers with free sunflower seeds. When the flowers mature, participants are asked to monitor them a few times a week for about a half-hour or until five bees of any species visit the flower, whichever comes first.

The data from these observations are recorded on a Web site, along with some simple notes about weather and other conditions. Project scientists will use the information collected to build a census of local pollinators, which will in turn help them track the effects of threats to their survival. To learn more about the count or to sign up, visit their Web site at [www.greatsunflower.org](http://www.greatsunflower.org).

# Home energy audit rebates available

With energy prices rising, now's the time to make your home more energy efficient. Have your home's energy use evaluated by a certified building analyst and receive up to \$250 in rebates from PPL Electric Utilities. Rebates are limited to the first 5,000 PPL Electric Utilities customers who act.

Energy audits show where you can save energy and money and make your home more comfortable. Analysts look at insulation, air filtration, heating and cooling systems, lighting and appliances. Recommendations are included in a detailed report and prioritized by energy savings.



Single-family homeowners must be PPL Electric Utilities residential customers to receive a rebate and must reside in the home. Audits must be performed by a certified Building Performance Institute analyst in PPL Electric Utilities' service territory.

Rebates of \$250 are available for customers with permanently installed electric heat. Homeowners using other fuels for primary heating can receive a \$100 rebate. For a complete list of certified building analysts, visit [www.pplelectric.com](http://www.pplelectric.com) and click on the "e" at the bottom right of the page, or call 1-866-941-7313.



**Wallenpaupack Environmental Learning Center**  
**126 PPL Drive, P.O. Box 122**  
**Hawley, PA 18428**