

December 16, 2005

Ash Vacuuming Continues Despite Harsh Winter Weather

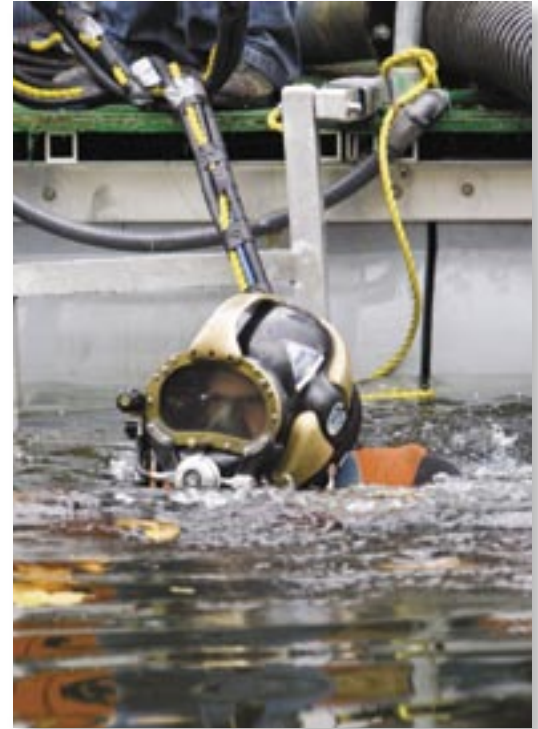
There may be snow on the ground, but divers – in heated wet suits – are continuing to vacuum ash from the bottom of the Delaware River.

If you've been at the river recently, you may have noticed the two custom-built dive platforms the divers are using or the florescent green buoys that mark the areas to be cleaned or the two black plastic pipelines that carry the vacuumed material to Ash Basin #4 for disposal.

With the powerful suction pumps on the dive platforms, the divers are vacuuming an average of about 2,000 square feet a day, seven days a week.

About 158,000 square feet of ash deposits – nearly four acres – have been identified within about a mile downriver from the PPL boat launch. Removal of those deposits will continue every day through the winter as long as river conditions permit.

Plans are under way to build a third dive platform and have it operating by early January. With the three platforms operating, it's currently projected that the cleanup of these areas will be completed in early March, but we are working to accelerate that date.



From the Cleanup Director



Even though winter has definitely arrived at Martins Creek, our crews are continuing to work diligently on the ash cleanup.

Divers are in the water every day that it's safe to do so, vacuuming the ash that we've found. Crews have insulated the pipelines that are carrying the vacuumed material from the dive platforms in the river up to Ash Basin #4 and have taken

other measures to prevent freezing. They've also built enclosures for the intermediate pumping stations along the pipelines. And they've built an enclosed area at the PPL boat launch to allow construction of a third barge to continue regardless of the weather.

We are continuing to work with the Pennsylvania Department of Environmental Protection on our plans for the cleanup. DEP has approved our revised work plan

for Phase III - cleanup of the ash deposits we found in the recent reassessment of the river. We will soon begin developing plans for Phase IV to address river work that may be needed over the long term.

We also are continuing to attend community meetings to keep local officials informed about the progress of the cleanup and to answer their questions. On Nov. 21, we were at the Lower Mount Bethel Township supervisors meeting, and on Dec. 6 we attended the Harmony Township meeting. On Dec. 8, the Martins Creek Plant Advisory Committee met. The Martins Creek Environmental Advisory Committee meeting on Dec. 12 was cancelled, but it looks like we'll meet again on Jan. 12. We value the input we have received, and are addressing any concerns that were raised.

If you have questions about the cleanup, I would like to hear from you. Please call me at 1-866-364-2800 or send an e-mail to cleanupdirector@pplweb.com.



Bob Barkanic

Reassessment of River Finds Smaller Areas of Ash Deposits

A reassessment of the river bottom to determine where fly ash may have settled following the heavy rain and high river flows in October and November was completed recently.



In an assessment conducted in early September, the ash had been located in two large areas - totaling about 38 acres - within about a mile of the PPL boat launch. Both of

those areas were close to the middle of the river. In the recent assessment, a number of smaller ash deposits were

found in that same area. Those - a total of nearly four acres - are closer to shore, many in backwaters and eddies.

The assessment, which extended south to Bull's Island, about 32 miles south of Easton, included a combination of divers examining the river from shoreline to shoreline, a walk-down of the shorelines and sediment sampling. No recoverable ash was found beyond a mile downstream of the PPL boat launch.

Well Water Results Good; Bottled Water Distribution Discontinued

Since shortly after the fly ash leak in late August at Martins Creek Ash Basin #4, we have been providing bottled water at the plant gate and at the Harmony Township municipal building for area residents. Although water samples taken right after the spill from nearby residential wells and at the Easton Water Authority showed no impact on the quality of drinking water, we offered to provide bottled water until the final test results from all the wells we had been asked to sample were received.

Since then, PPL has conducted two rounds of residential well tests in both Lower Mount Bethel and Harmony townships and has

detected no water quality issues attributable to the fly ash release.

Well owners also have been offered the opportunity to have the test results reviewed by the Warren County Department of Health (for New Jersey residents) or the Pennsylvania Department of Health (for Pennsylvania residents).

With these assurances that residential well water has not been affected by the ash spill, we are discontinuing the distribution of bottled water.

If you have not yet had your well tested and would like it done, please call 1-866-364-2800. The opportunity



to have wells tested again will be offered quarterly through August 2007.

From the desk of Bob Barkanic, cleanup director.
Contact him at cleanupdirector@pplweb.com, or toll-free at 1-866-364-2800.

